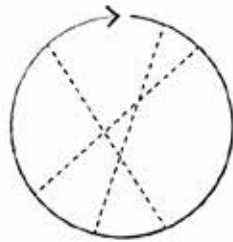


Traditional Knowledge Mapping projects by the Yellowknives Dene and Sahtu Dene First Nations.

Navigation occurs by experience of the land, landscape markers, and orally-transmitted stories.

Traditional life is cyclical, & based on annual animal migrations and seasonal patterns. This gives rise to the Indigenous worldview of cyclical time.



Cyclical time |  
Indigenous worldview



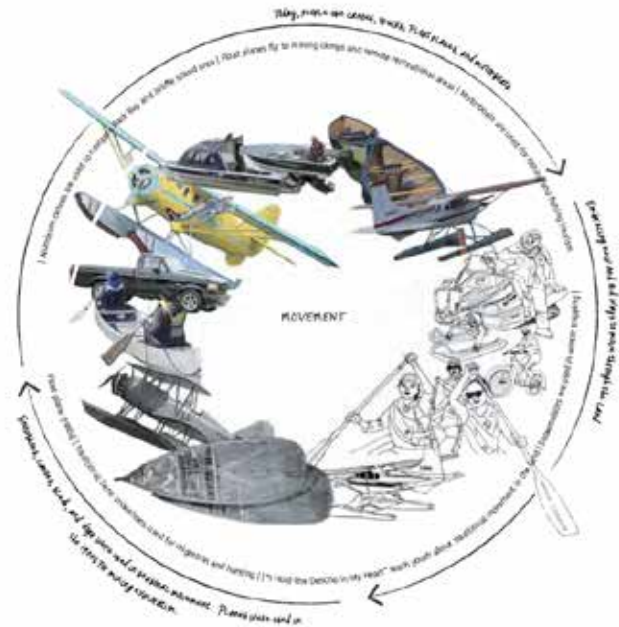
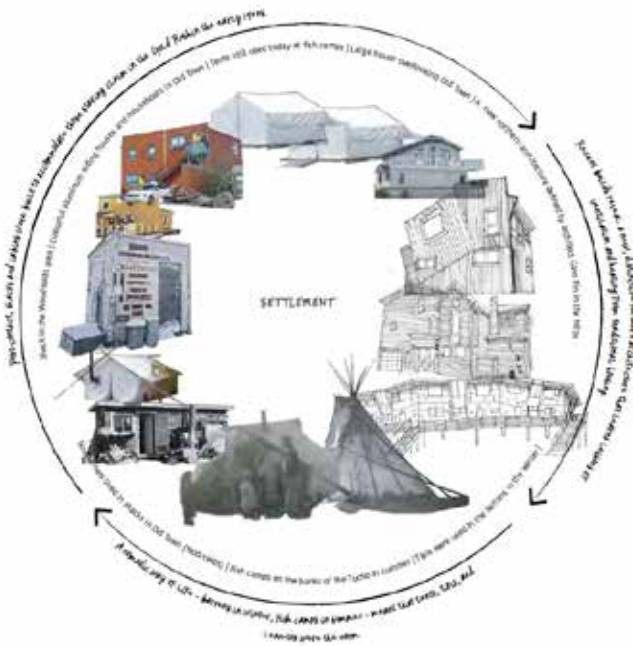
Linear time |  
Western worldview

UNDERSTANDING  
A LIVING HERITAGE

Black and white |  
Traditional  
ways of life

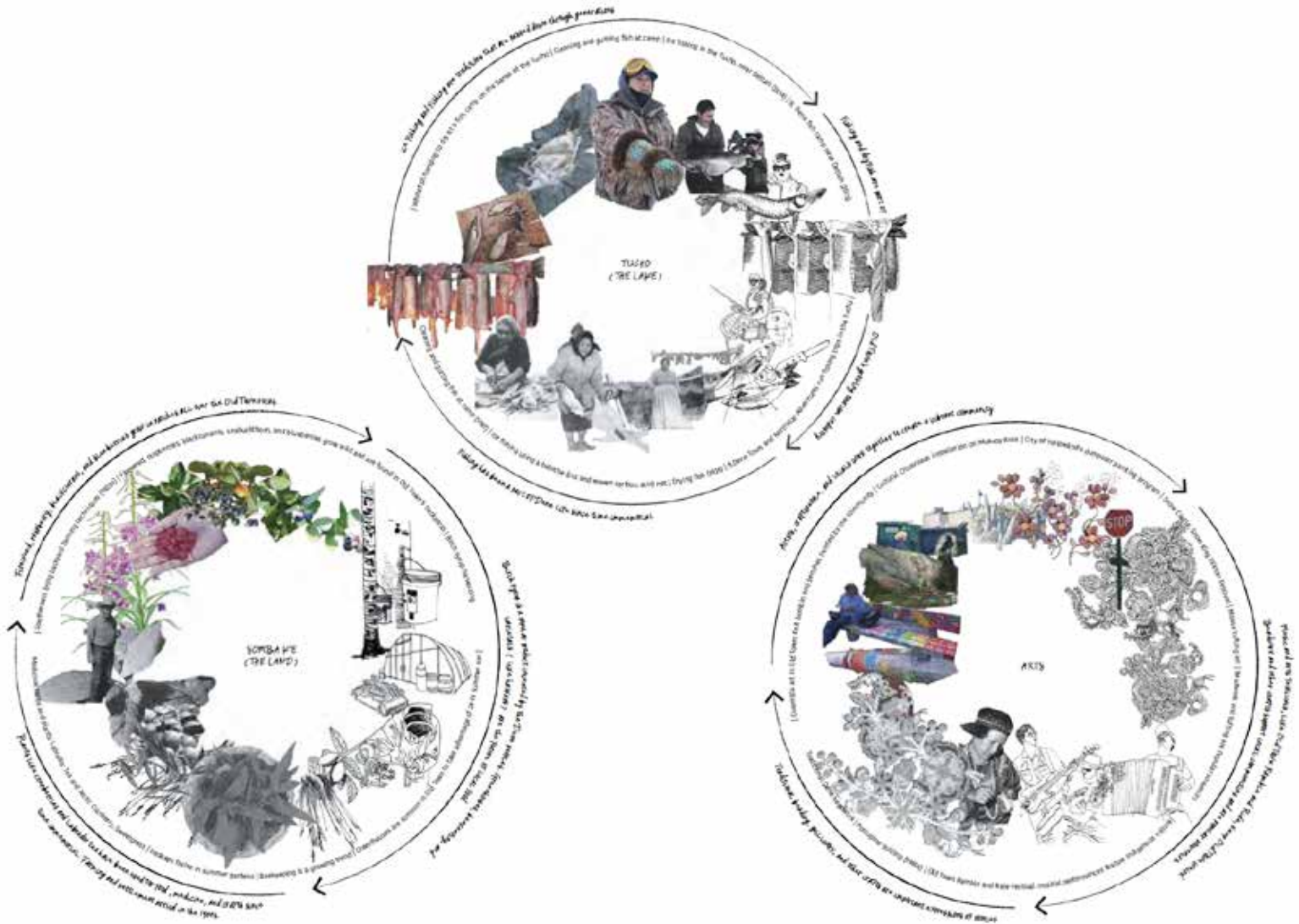
Full colour |  
A changing city and  
demographics

Line drawing |  
Cultural resurgence  
and celebration



Understanding Yellowknife's heritage as living through the lens of an Indigenous worldview of cyclical time: Patterns of settlement and movement.





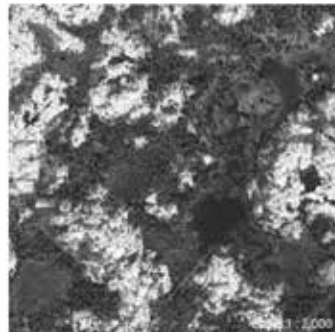
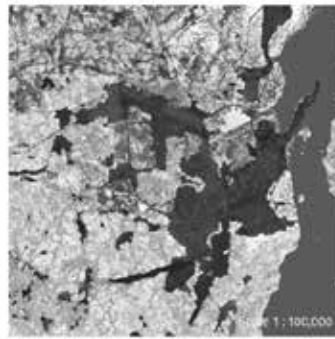
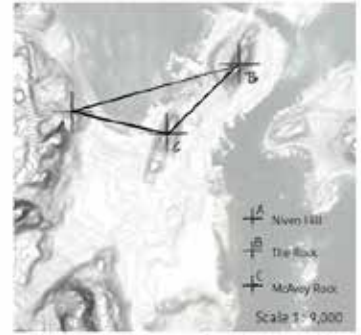
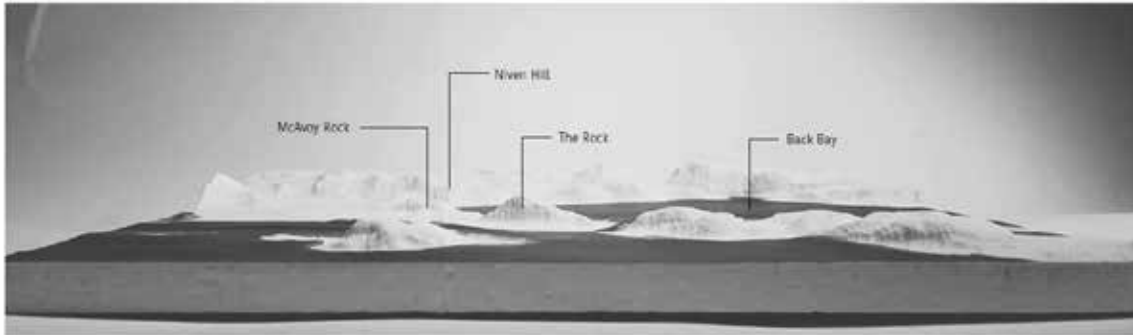
Understanding Yellowknife's heritage as living through the lens of an indigenous worldview of cyclical time: The land, the lake, and local arts.



Existing heritage plaque locations and topographical variations in Old Town.



Proposed heritage plaque locations and rocky outcrops in Old Town.



The rocks are a part of Yellowknife's heritage and identity; they have been used as viewpoints and gathering spaces for generations.

Yellowknife's rocky landscape shapes the city limits and the surrounding forest.

Different ways Yellowknifers move through the landscape.

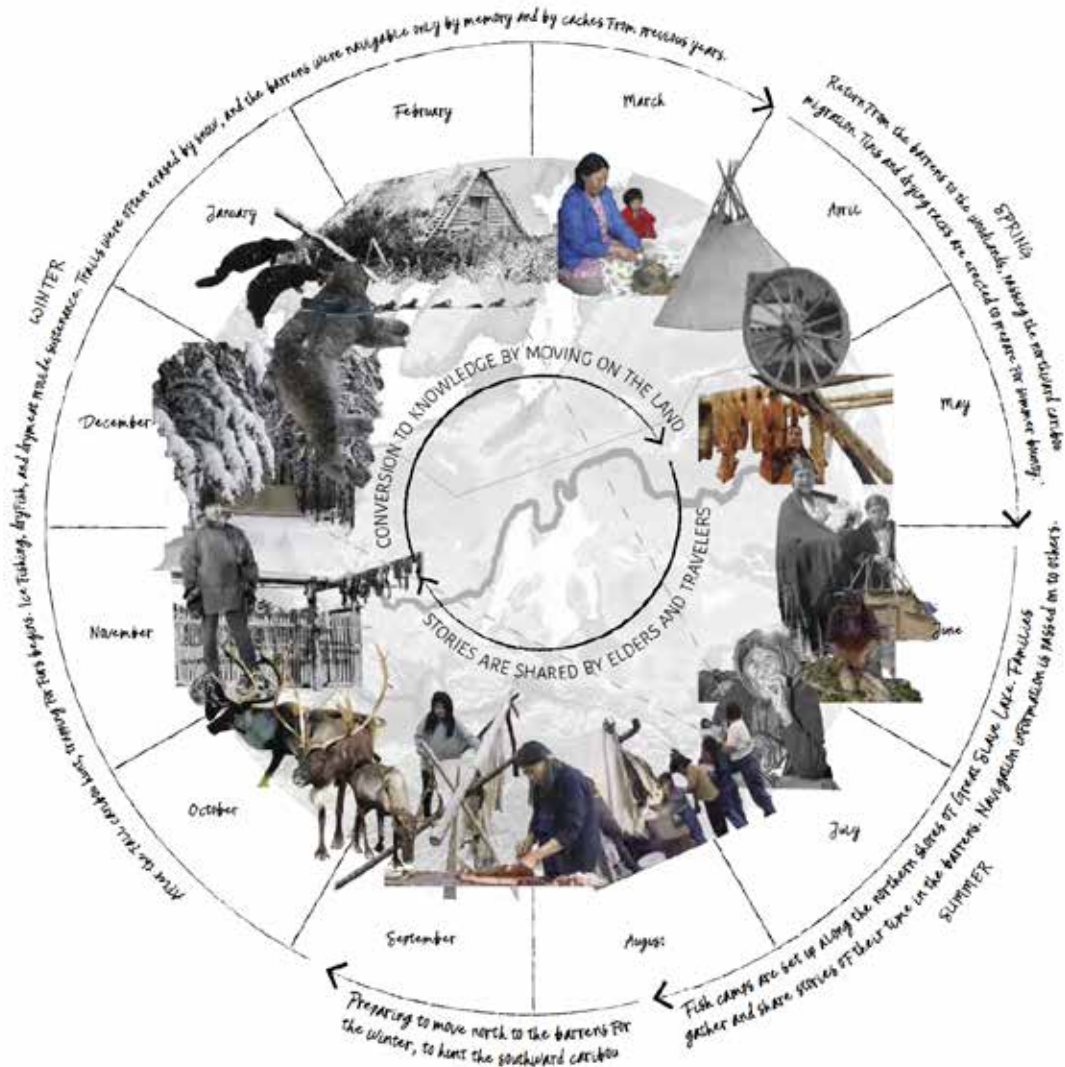




Timelining the information presented by existing plaques in Old town reveals only a glimpse of the rich, diverse histories embedded in the landscape.

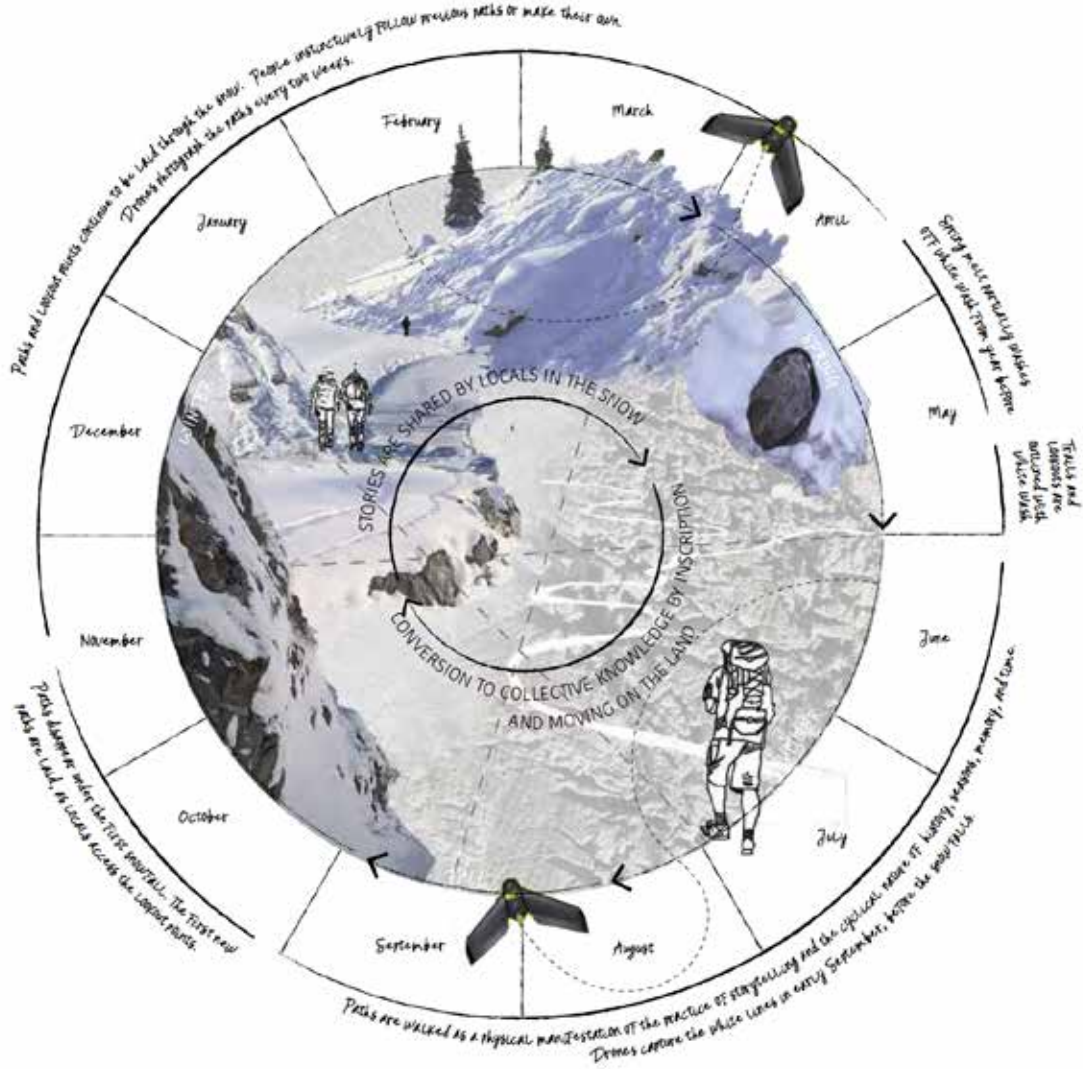


Seasonal patterns of tourism in Old Town provide an opportunity to relay knowledge between diverse groups of users.



Traditional, cyclical Dene way of life in tandem with the seasons and the transmission of traditional knowledge.





Phasing of LINE in tandem with the seasons and as a metaphor for traditional knowledge transfer.



McAwoy Rock



McAwoy Rock



The Rock



The Rock

Paths laid in the snow by locals become a metaphor for storytelling, as these stories become memories inscribed on the landscape in the summer. A relationship through time and space is created between locals and visitors.



Section A.



Section B

McAoy Rock in winter





Section CC



Section DD



McAwoy Rock in summer



McAvoy Rock in winter | Year 5



McAvoy Rock in summer | Year 6

LINE allows visitors to experience what it is like to live in cycles in tandem with the seasons, and to connect with stories and memories of those that came before us.



McAvoy Rock | Year 1



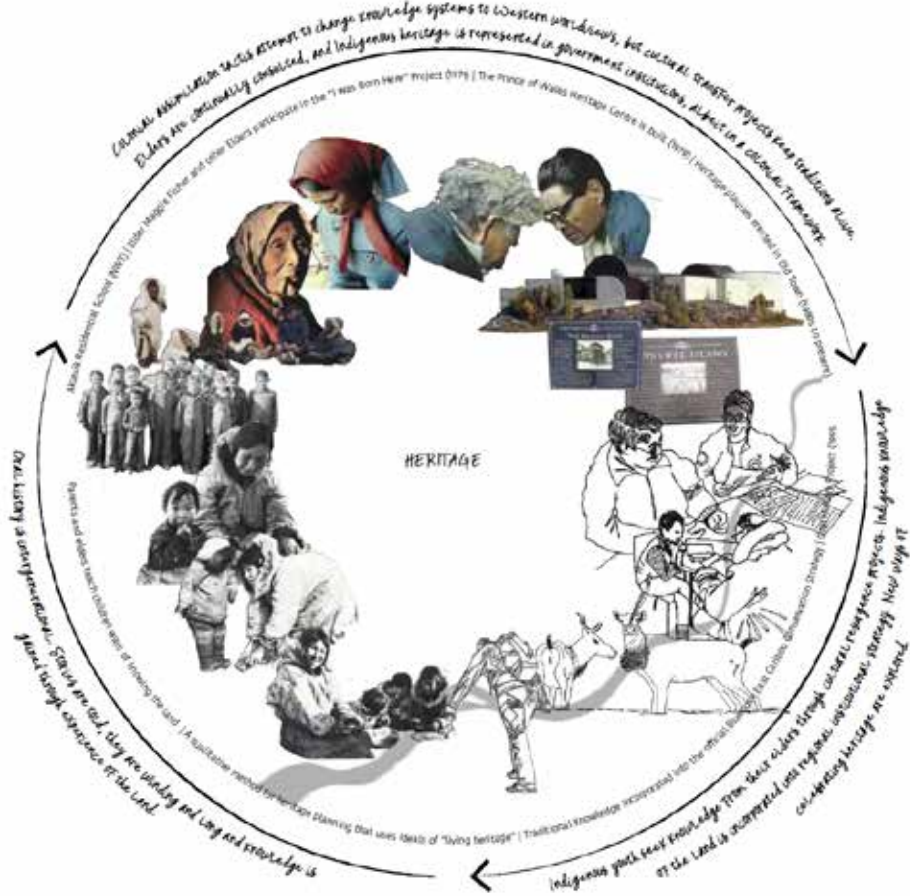
McAvoy Rock | Year 5



McAvoy Rock | Year 10

A meshwork of lines is developed as people move through the winter landscape guided by their memory. Similar to Traditional Knowledge maps, this new map will reveal patterns of accumulated change, and how relationships between memory, story, and landscape changes over time.





Traditionally, heritage and culture was orally transmitted using memory. This was disrupted by residential schools, but important cultural resurgence projects sought to document traditional knowledge from Elders. Presently the Dene Mapping Project, Bluenose East Caribou Conservation Strategy, and others seek to keep storytelling, memories, and traditional knowledge alive as an essential part of Yellowknife's living heritage, and LINE has the potential to do this as well.

